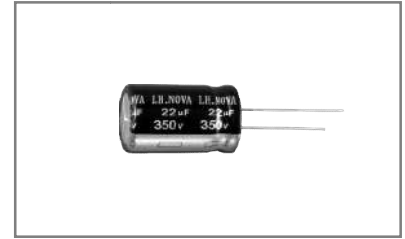


ARG

ARG Series Aluminum Electrolytic Capacitor



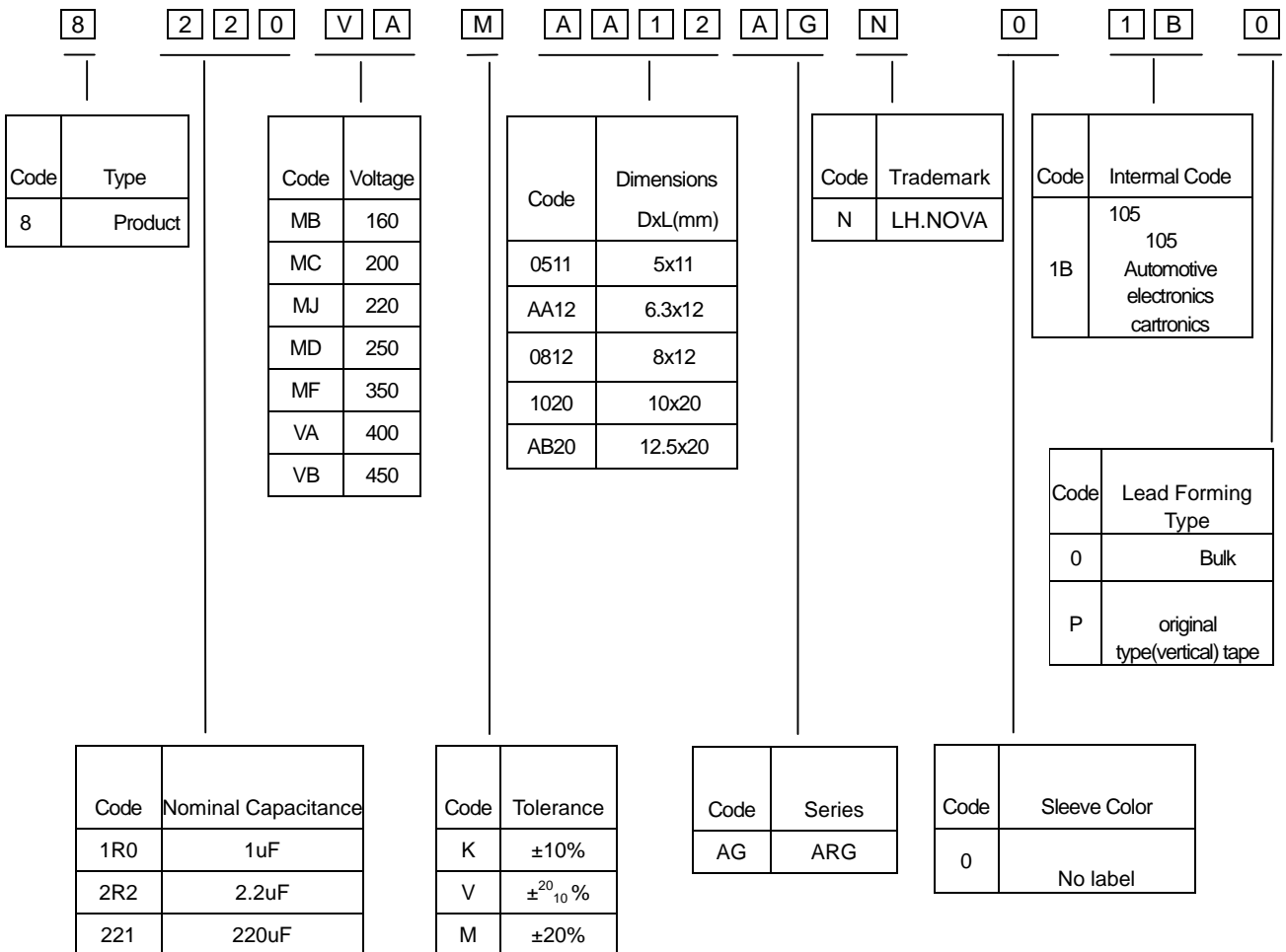
◆ Feature

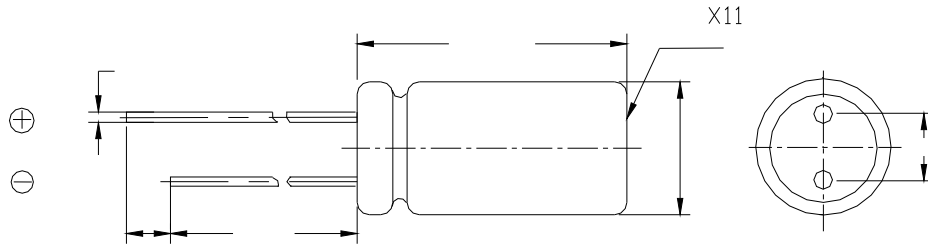
- * : 105 8000
Load life:105 8000 hours.
- *
Extreme long life.
- * AEC-Q200
Compliant to the AEC-Q200 Directive.
- * RoHS
Compliant to the RoHS Directive.

◆ Application

- *
Ideally suited for automobile modules switching power supplies, and other electronic products.

◆ Part Number



Product Structure


(mm)	±0.5			±1.0				
D(mm)	5	6.3	8	10	12.5	16	18	22
F±0.5(mm)	2.	2.5	3.5	5.0		7.5		10.0
d±0.1(mm)	0.5		0.6			0.8		
L(mm)	11,12		12,16	12,16,	16,20,25	16,20,25,30,35	20,25,30,35,40	25,30,35,40
	L±2.0							

Main specifications

	Performance Characteristics	
Rated Voltage Range	160~450V.DC	
Operating Temperature Range	-25 ~+105	
Nominal Capacitance Range	6.8~220μ F	
Capacitance Tolerance	±20% M +25 120Hz	
Leakage Current (25 °C)	(V) Rated working voltage	160~450
	Leakage current	2 I 0.03CV+25(μ A) After 2 min . I 0.03CV+25(μ A)
	C	μF Nominal Capacitance in μF
	V	V Rated working voltage in V
DF Dissipation Factor	(V) Rated working voltage	160~450
	DF(MAX) (25 °C, 120Hz)	0.15
	1000μF	1000μF DF 0.02
	For capacitance of more than 1000μF, add 0.02 for every increase of 1000μF.	

Dimensions and ripple current

WV/V	160		200		250		350		400		450	
Cap/ μ F	(1)	(2)	(1)	(2)	(1)	(2)	(1)	(2)	(1)	(2)	(1)	(2)
1.0									8x12	70	8x12	72

Packaging

*

Taped packaging quantity

D(mm)	Qty. (Pcs)	L() 22mm	L() 25±2mm
		LxWxH(mm)	LxWxH(mm)
5	2000	328x235x50	328x235x57
6.3	1500		
8	1000		
10	600		
12.5	400		
16	250		
18	200		



*

Bulk packaging quantity

D(mm) Diameter	L(mm) Length	Quantity / pcs/bag	/ bag/box	/ Inner box/outer box	(/) psc/box
4	7-8	1000	15	4	60000
5	5-7	1000	12	4	48000
5	11	1000	10	4	40000
6.3	5-7	1000	10	4	40000
6.3	8-15	1000	8	4	32000
6.3	15-20	1000	6	4	24000
8	5-12	500	8	4	16000
8	14-16	500	8	4	16000
8	20	500	6	4	12000
10	9-13	500	6	4	12000
10	14-16	250	8	4	8000
10	17-20	250	8	4	8000
10	25-30	200	8	4	6400
10	31-35	200	6	4	4800
12- 13	16-28	200	6	4	4800
12- 13	30-40	100	8	4	3200
12- 13	45-55	100	6	4	2400
16	15-20	100	8	4	3200
16	21-30	100	6	4	2400
16	31-40	50	10	4	2000
18	15-20	100	6	2	1200
18	25-30	50	8	2	800
18	35-40	50	6	2	600
18	41-50	25	10	2	500
20	25-40	50	10	2	1000
22	25-35	50	5	2	500
22	40	25	10	2	500